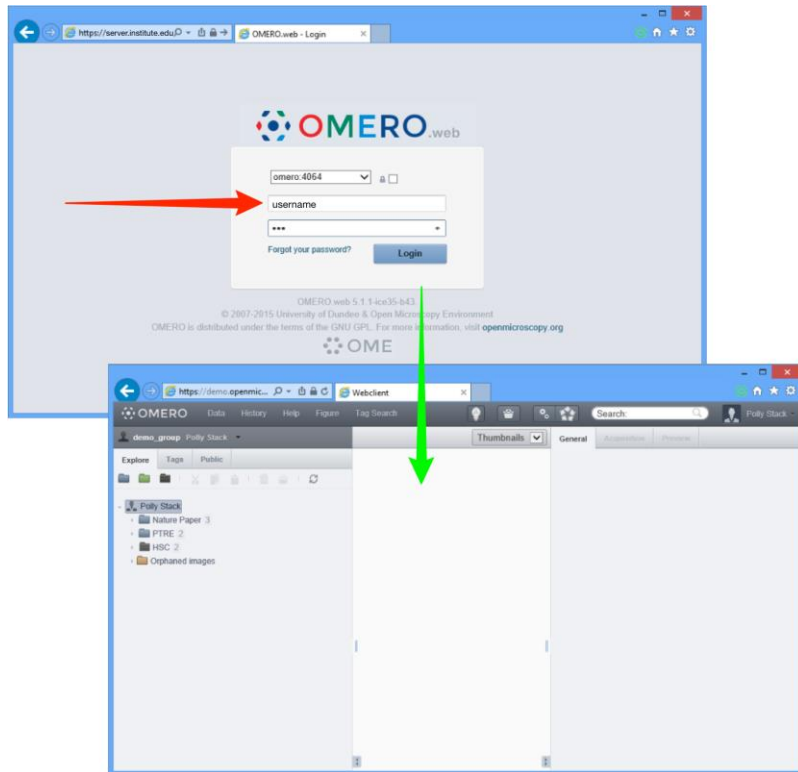


7 Use OMERO.web to view your data from any web browser. Your institute will have a unique OMERO.web URL in the form:

**omero.cellnanos.uni-osnabrueck.de**

OMERO.web uses the same login and has the same functionality as OMERO.insight, except OMERO.web cannot import data. Enter your OMERO username and password and click **Login**



Detailed User Guides for common workflows using OMERO.insight and OMERO.web are available online and to download at:

**help.openmicroscopy.org**

For other questions or issues please use the forums and mailing lists at:

**openmicroscopy.org/site/community**

## Getting Started with OMERO.insight

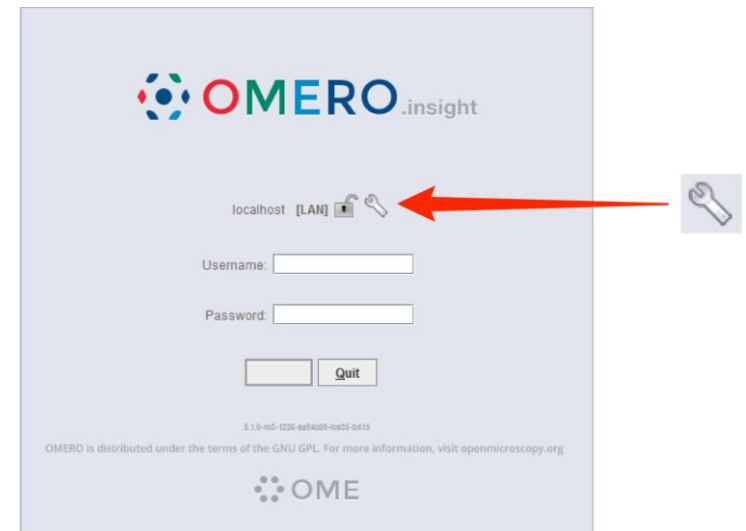
Your institute has an OMERO server that allows you to store image data centrally. You can use the OMERO.insight client to upload, view and download data from any computer or laptop on campus.

Your username, password and server address used to log into the OMERO server, are set by your institute, and can be obtained from your OMERO system administrator.

1 Download the OMEROLauncher from [http://www.calm.uni-osnabrueck.de/cms/download.php?cat=75\\_Service&file=OMEROLauncher.exe](http://www.calm.uni-osnabrueck.de/cms/download.php?cat=75_Service&file=OMEROLauncher.exe)

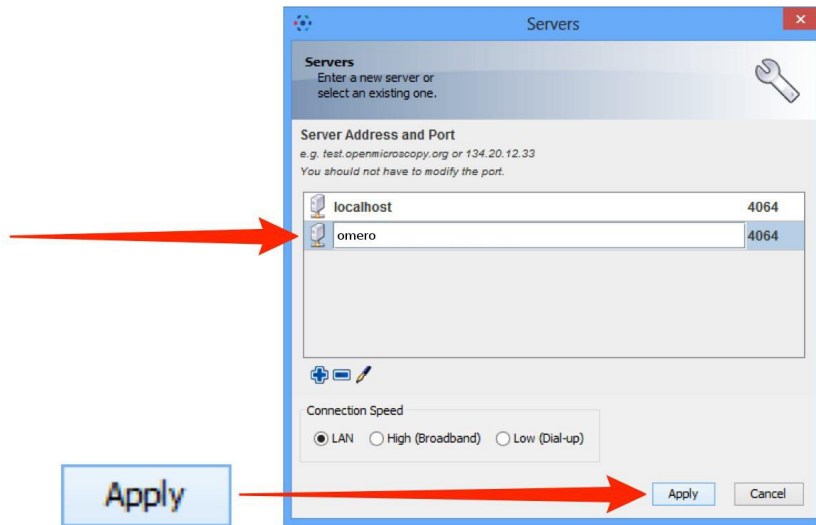
to the directory where OMERO should be installed and execute the Launcher.

2 Open OMERO.insight client  
Click on the **Spanner** icon.



- 3 In the **Add Server** dialogue box, click on the **+** icon.  
Enter the server address e.g.:  
**omero.cellnanos.uni-osnabruECK.de**

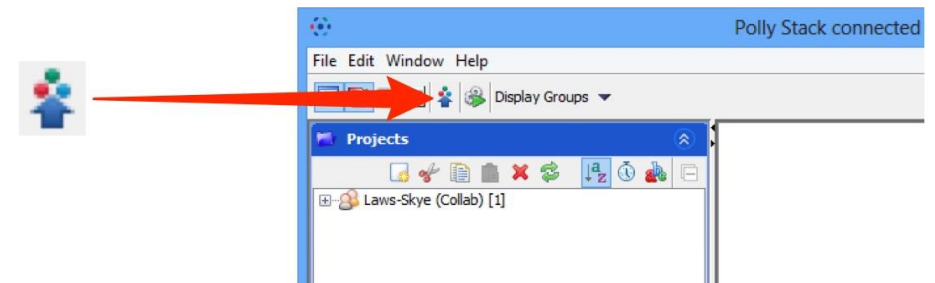
Click on **Apply**.



- 4 Enter your OMERO **Username** and **Password**  
Click on **Login**



- 5 Click on the **Importer** icon to add image data  
Using the file chooser in the Importer window select and queue data for import  
Use the location window to choose existing or create new Projects, Datasets or Screens to import the data into



**Note:** To import data from a networked drive on Macs, the drive must be mounted in the Finder first